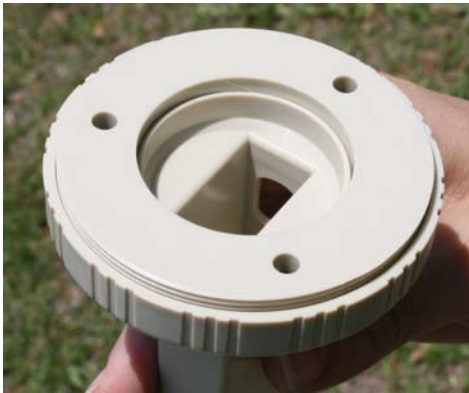


SR-6P SIRIUS XM Satellite Radio Amplified Antenna Installation Guide

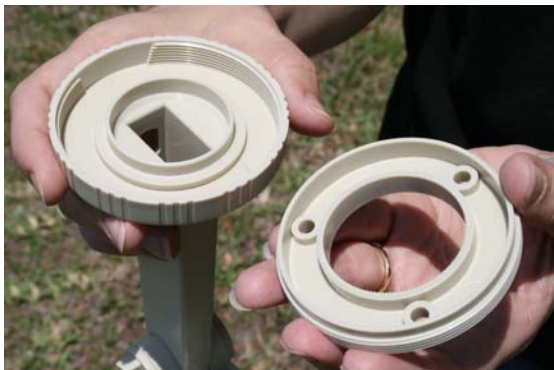
The SR-6P antenna comes packaged with the antenna, a plastic mount, bag of screws, and RG-6 to SMB cable. The mount can be attached to a pole with u bolts or to a wall or other surface with screws. Below is a step by step diagram on how to remove the base from the mount. Be sure to locate the antenna with a clear view of the southern sky when mounting.



1. Turn the mount over with the bottom facing up.



2. To separate the base ring from the bottom of the mount hold the center of the mount with one hand and turn the outer ring clockwise.



3. Both pieces should separate allowing for the base ring to be mounted to a wall or pole. Screw the base ring back on the mount once mounted.

