

sportscaster™

YOUR SEASON TICKET TO XM SATELLITE RADIO

Portable Battery Kit



Instruction Manual

Model XM101WK



Advanced Global Technology, LLC.



Important: This manual contains important safety and operating information. Please read, understand, and follow the instructions in this manual. Failure to do so could result in personal injury, death, and/or damage to your Sportscaster, accessories, and/or to your vehicle or property.

A Brief History

Thank you for purchasing the new AGT Sportscaster Satellite Radio Accessory Kit.

- Mount your Sportscaster into cradles that are easily installed in your vehicle or your home. Connect your Sportscaster's power, and antenna connectors and you are ready to enjoy XM Satellite Radio.
- A built-in FM transmitter allows you to hear XM programming on your car or home FM radio, using an unused frequency on the FM band.
- Available accessory kits make your Sportscaster useable in the home or on the go.

About Advanced Global Technology

Advanced Global Technology (ACT) is a worldwide leader in mobile, home and portable electronics and audio technology. With its exciting line of satellite radio products, AGT offers a broad portfolio of products to answer a wide variety of information and entertainment needs-in the vehicle, home, office, and portable environments.

About XM Satellite Radio


XM Satellite Radio is the nation's leading provider of satellite radio with more than 6 million subscribers. XM offers more than 160 digital radio channels: 100% commercial-free music channels, ranging from hip hop to opera, rock to bluegrass, big band to reggae; 71 talk radio channels, including news, sports, comedy, and children's programming; and 21 channels of round-the-clock traffic and weather reports. Subscribers pay \$12.95 a month for the XM service, which was named Best Radio Service by the music industry's leading magazine Billboard at the 2004 Digital Entertainment Awards. Exclusive programming on XM includes Major League Baseball® games for every team, all season long. You can listen to XM on a variety of satellite radio receivers for the vehicle, home, and portable use. In-dash XM radios are available in more than 120 vehicle models for the 2006 model year. XM is broadcast via satellite from coast to coast, so you can listen to XM continuously as you travel across the country.


* To receive the XM service, you must subscribe to XM. Available in the continental United States and Canada only. Satellite radio reception depends on the ability of the antenna to receive a signal. The signal may not be available in buildings or if obstructed (e.g., by mountains, trees, bridges, etc.).


Let's Get Started

First, some important reminders:



We know you're eager to turn on your new Sportscaster and listen to XM, but please take a moment to read through this instruction manual.

 **Warning:** This manual contains important safety and operating information. Please read, understand, and follow the instructions in this manual. Failure to do so could result in personal injury, death, and/or damage to your Sportscaster, accessories, and/or to your vehicle or property.

 **Caution:** Use your Sportscaster only with the enclosed components or approved accessories. Do not modify wires or other connectors in any way; you could cause a malfunction, which could damage your Sportscaster and will void your warranty.

 **Caution:** Refrain from using food or drinks near your Sportscaster. Spilling food or drinks on the unit can damage it. Also, improperly installing the antenna cable can cause leaks, which can damage your Sportscaster and/or your vehicle.

Important battery information-please read

Your Sportscaster's accessory battery pack should be charged before you use the accessory with the receiver. The amount of charge is indicated by the battery level indicator on your Sportscaster's display. When you're charging the battery, you will see . When the battery is exhausted, you will see .

When you use your Sportscaster for the first time, charge the battery until the battery level indicator indicates it's fully charged. Then, use your Sportscaster until the battery is completely discharged. This charge/discharge cycle will reset the battery level indicator so that it will more accurately report the level of the battery with future usage.

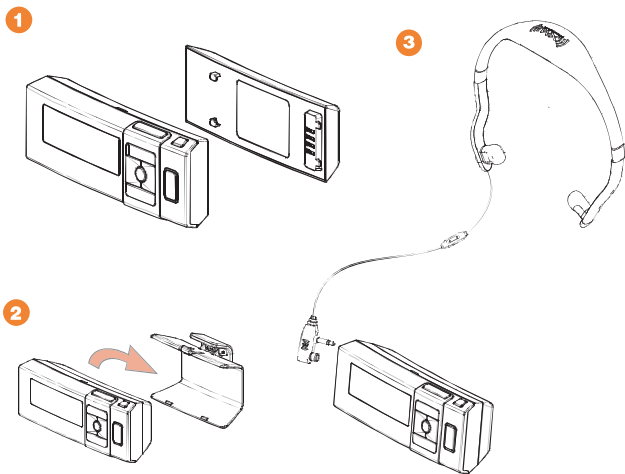
Your battery performs best when used and charged in an ambient temperature of between 50°F to 90°F (10°C to 32°C). Batteries gradually lose their ability to retain the same capacity as when they are new and require longer charging times. When a battery no longer holds its charge, you should replace the battery. Always use authorized batteries and power adaptors. Replacement batteries and power adaptors can be ordered online at www.advancedgt.com.

To prevent injuring yourself or damaging your Sportscaster, do not disassemble, crush, or puncture the battery. Do not leave your Sportscaster inside a hot vehicle or in direct sunlight for extended periods of time. Never allow metal to touch the battery terminals. Your Sportscaster's rechargeable battery should be disposed of properly and may need to be recycled. Contact your local recycler for details. Never dispose of batteries in a fire or in water as they may explode.

Installation

Using the Portable Battery Kit

1. Attaching the battery to your Sportscaster is simple. First, install battery by lining up the battery with the slots in the back of your Sportscaster. Next, slide the battery into place until it is locked. (Figure 1). For a complete charge, the battery must be charged for approximately 3 hours. The battery life is approximately 4 hours.
2. To attach the belt clip onto your Sportscaster, push the Sportscaster into the belt clip until it locks into place. (Figure 2).
3. Plug the connector of the integrated XM antenna headset into the connectors with the wire exiting upwards as shown in (Figure 3).
4. To remove the Sportscaster, push the release tab on the top of the belt clip upward and pull the Sportscaster forward.



Audio Level

The Audio Level option adjusts the Sportscasters audio output. There are 10 levels of adjustment available.



1. Press the Menu button to enter the Setup Menu.
2. Press the Up or Down Arrow button to navigate to Audio Level.
3. Press the Select or Right Arrow button to enter the Audio Level sub menu.
4. Press the Left or Right Arrow button to adjust the audio level to your comfort.
5. Press the Select button to store the new setting.



Note: The default setting is level 6.

Display Options



Contrast

This option is used to adjust the Sportscasters display contrast. There are 10 levels of adjustment available.



1. Press the Menu button to enter the Setup Menu.
2. Press the Up or Down Arrow buttons to navigate to Display Options.
3. Press the Select or Right Arrow button to enter the Display Options sub menu.
4. Press the Up or Down Arrow buttons to navigate to Contrast.
5. Press the Select or Right Arrow button to enter the Contrast setting screen
6. Press the Left or Right Arrow button to adjust the contrast to your desired level.
7. Press the Select button to store the new setting.



Note: The default setting is level 6.

Brightness

This option is used to adjust the Sportscasters display brightness. There are 10 levels of adjustment available.



1. Press the Menu button to enter the Setup Menu.
2. Press the Up or Down Arrow button to navigate to Display Options.
3. Press the Select or Right Arrow button to enter the Display Options sub menu.
4. Press the Up or Down Arrow button to navigate to Brightness.
5. Press the Select or Right Arrow button to enter the Brightness setting screen
6. Press the Left or Right Arrow button to set the brightness to your desired level.
7. Press the Select button to store the new setting.



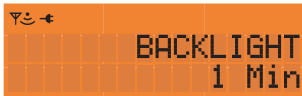
Note: The default setting is level 6.

BackLight Timeout

This option powers the Sportscaster's backlight Off after a preset time has elapsed. This feature is only active when using the Portable Battery Kit to power your Sportscaster.



1. Press the Menu button to enter the Setup Menu.
2. Press the Up or Down Arrow buttons to navigate to Display Options.
3. Press the Select or Right Arrow button to enter the Display Options sub menu.
4. Press the Up or Down Arrow buttons to navigate to Timeout.
5. Press the Select or Right Arrow button to enter the Backlight Timeout screen.
6. Press the Up or Down Arrow buttons to select either Off, 1, 3 or 5 minutes.
7. Press the Select or Right Arrow button to enter the desired time.



Note: The default setting for the BackLight Timeout is Off.

Troubleshooting

Your Sportscaster should provide you with trouble-free performance without needing any servicing. If it does not appear to be working properly, first try to remedy the problem by following these steps:

1. Attach all connections firmly and securely.
2. Ensure the cigarette lighter adapter or auxiliary power socket is clean and free of corrosion.
3. Check the adapter fuse by unscrewing the ribbed end of the adapter. If required, replace with a 2-amp fuse only. If your cigarette lighter adapter does not have a removable end cap, then it is equipped with an internal fuse that resets itself after it is left unpowered for a period of time.

If you see this on the display:

You should:

NO SIGNAL

Cause: The XM signal is being blocked.

Move your Sportscaster away from the obstructed area (e.g., an underground garage).

CHECK ANTENNA

Cause: Possible problem with XM antenna

Connect the antenna. Make sure the cable and connectors are not damaged or kinked.

OFF AIR

Cause: The channel selected is not currently broadcasting.

Tune to another channel.

UPDATING

Cause: Your Sportscaster is being updated with the latest encryption code.

Simply wait until the update is completed.

Cause: You may have tried to tune to a channel that you have blocked or that you cannot receive with your subscription package.

To receive that channel, contact XM Satellite Radio at 1.800.967.2346.

Warranty Information

One-Year Limited Warranty

This limited warranty sets forth all **Advanced Global Technology** responsibilities regarding your product. There are no other expressed or implied warranties from **Advanced Global Technology**.

Warranty Service Provided

If you purchased the product new from a retail vendor, **Advanced Global Technology** warrants the equipment against defects in material and workmanship for a period of one (1) year from the original date of purchase. This warranty is in lieu of all other express warranties. This warranty begins when you purchase the product and continues for one (1) year unless you sell or rent the unit, in which case the warranty stops.

Advanced Global Technology disclaims any implied warranty, including the warranty of merchantability and the warranty of fitness for a particular purpose, as of the date of one year from your original purchase of the product **Advanced Global Technology** assumes no responsibility for any special, incidental, or consequential damages.

This warranty gives you specific legal rights and you may have other rights which vary from state to state. Some states do not allow the exclusion or limitations of special, incidental, or consequential damages or limitations on how long a warranty lasts, so the above exclusion or limitation may not apply to you.

Warranty Service Not Provided

This warranty does not cover damage resulting from accident, misuse, abuse, improper installation or operation, lack of reasonable care, unauthorized modification, or the affixing of any attachment not provided by **Advanced Global Technology** with the equipment, and/or loss of parts. This warranty is voided in the event any unauthorized person opens, alters, or repairs the product.

All **Advanced Global Technology** equipment being returned for repair must be suitably packaged.

What to Do for Warranty Service

During the first thirty (30) days, a defective product is eligible for over-the-counter exchange at the retailer from whom it was purchased. After thirty (30) days, the defective product should be returned to the authorized service center. Please allow a minimum of 2-3 weeks for the return of your product. For the shipping address of the authorized service center, call one of the telephone numbers given below.

Your product will be repaired or replaced if examination by the service center determines the product is defective. Products received damaged as a result of shipping will require you to file a claim with the carrier prior to repair. A product received with missing parts or with damage due to abuse, inadequate packing or some other noncompliance with this limited warranty will be returned to you C.O.D., freight collect.

Note: A product received which was not made by Advanced Global Technology or which is not defective as determined by our test procedures will not be repaired and will be returned to you C.O.D., freight collect.

To Obtain Warranty Service

- Provide proof of the date of purchase within the package.
- Prepay all shipping costs to the authorized service center.
- Include a return shipping address within the package.

Please retain your sales receipt, the carton, the packing materials, and the printed material. The original carton is the best shipping container for the Product should you have to return it.

For your reference:

Model Number _____ XM Radio ID _____ Serial Number _____

Date of Purchase _____ Where Purchased _____

**Advanced Global Technology Customer Service Telephone Number:
1-877-SUPT-ACT (787-8248)**

Visit Us on the Web: www.advancedgt.com



Advanced Global Technology, LLC.

Advanced Global Technology, LLC
P.O. Box 2060
New York, NY 10156-2060
U.S.A.
Customer Service (1) 877.SUPT.AGT

www.advancedgt.com

AGT, Sportscaster name and related logos are
trademarks of Advanced Global Technology, LLC.

XM name and related logos are registered
trademarks of XM Satellite Radio Inc.

 Printed on Recycled Paper
©2006 Advanced Global Technology, LLC. All rights reserved.